

#### Non-Reversing, Three Pole Contactors With AC Coil, Series CA7 (Open type only) ①

I <sub>e</sub> [A] ①		Ratings for Switching AC Motors (AC2 / AC3 / AC4)										Auxiliary Contacts per Contactor		Open Type		Price
		kW (50 Hz)				UL/CSA HP (60 Hz)										
		AC-3	AC-1	230V	400V / 415V	500V	690V	1 Ø		3 Ø						
												115V	230V	200V	230V	460V
9	32	3	4	4	4	1/2	1 1/2	2	2	5	7-1/2	1	0	CA7-9-10-*	120	
12	32	4	5.5	5.5	5.5	1/2	2	3	3	7-1/2	10	1	0	CA7-12-10-*	155	
16	32	5.5	7.5	7.5	7.5	1	3	5	5	10	15	1	0	CA7-16-10-*	174	
23	32	7.5	11	13	10	2	3	5	7-1/2	15	15	0	1	CA7-23-10-*	193	
30	65	10	15	15	15	2	5	7-1/2	10	20	25	0	0	CA7-30-00-*	222	
37	65	11	18.5/ 20	20	18.5	3	5	10	10	25	30	1	0	CA7-30-10-*	244	
43	85	13	22	25	22	3	7-1/2	10	15	30	30	0	1	CA7-30-01-*	244	
60	100	18.5	32	37	32	5	10	15	20	40	50	0	0	CA7-37-00-*	266	
72	100	22	40	45	40	5	15	20	25	50	60	1	0	CA7-37-10-*	288	
85	100	25	45	55	45	7-1/2	15	25	30	60	60	0	1	CA7-37-01-*	288	
97	130	30	55	55	55	10	20	30	30	75	75	0	0	CA7-43-00-*	286	
												1	0	CA7-43-10-*	308	
												0	1	CA7-43-01-*	308	
												0	0	CA7-60-00-*	350	
												1	0	CA7-60-10-*	372	
												0	1	CA7-60-01-*	372	
												0	0	CA7-72-00-*	403	
												1	0	CA7-72-10-*	425	
												0	1	CA7-72-01-*	425	
												0	0	CA7-85-00-*	460	
												1	0	CA7-85-10-*	482	
												0	1	CA7-85-01-*	482	
												0	0	CA7-97-00-*	577	
												1	0	CA7-97-10-*	599	
												0	1	CA7-97-01-*	599	



CA7-9-10 contactor



CA7-43-00 contactor



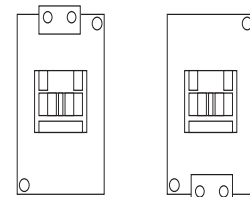
CA7-60-00 contactor

#### Coil Codes ②

AC Coil Code	Voltage Range	
	50 Hz	60 Hz
24Z	24V	24V
120	110V	120V
208	~	208V
220W	200V-220V	208V-240V
240	220V	240V
277	240V	277V
380	380V-400V	440V
480	440V	480V
600	550v	600V

#### Coil Terminal Position

All CA7 contactors are stocked and delivered with the coil terminals located on the line side (top) of the contactor. This is the typical configuration when using the contactor with an overload relay. When the contactor is used with the KT7 Motor Circuit Controller, the coil must be reversed, so that the coil terminals are located at the load side (bottom) of the contactor. CA7 coils can easily be reversed in the field, however, they are also available for order with the coils reversed from the factory. Contact your Sprecher+Schuh representative for more information about ordering CA7 contactors with reversed coils.



All CA7 contactors come with reversible coils.

#### Ordering Instructions

Specify Catalog Number	
Replace (*) with Coil Code	See Coil Codes on this page.

- ① AC1 Resistive Ratings and UL/CSA Continuous Current Ratings may be increased by the use of Lug Kits or Paralleling Links. See CA7 Accessories section for applicable information.
- ② Other voltages available, see page A56. Non-standard coil voltages not listed here must be ordered and installed separately as renewal parts.

#### Non-Reversing, Four Pole Contactors With AC Coil, Series CA7 (Open type only)

I <sub>e</sub> [A]		Ratings for Switching AC Motors (AC2 / AC3 / AC4)										Contact Configuration, Main Pole		Open Type	
		kW (50 Hz)				UL/CSA HP (60 Hz)									
		AC-3	AC-1	400V		500V	690V	1 Ø		3 Ø					
230V	415V			115V	230V			200V	230V	460V	575V				
												NO	NC	Catalog Number	Price
9	32	3	4	4	4	1 1/2	1 1/2	2	2	5	7-1/2	4	0	CA7-9-M40-*	120
						3	3	5	7-1/2	3	1	CA7-9-M31-*	132		
						2	2	2	2	CA7-9-M22-*	132				
12	32	4	5.5	5.5	5.5	1 1/2	2	3	3	7-1/2	10	4	0	CA7-12-M40-*	157
						3	3	7-1/2	10	3	1	CA7-12-M31-*	167		
						2	2	2	2	CA7-12-M22-*	167				
16	32	5.5	7.5	7.5	7.5	1	3	5	5	10	15	4	0	CA7-16-M40-*	176
						3	3	10	15	3	1	CA7-16-M31-*	186		
						2	2	2	2	CA7-16-M22-*	186				
23	32	7.5	11	13	10	2	3	5	7-1/2	15	15	4	0	CA7-23-M40-*	194
						3	3	7-1/2	15	15	3	1	CA7-23-M31-*	206	
						2	2	2	2	CA7-23-M22-*	206				
37	75	11	18.5	20	18.5	3	5	10	10	25	30	4	0	CA7-40-M40-*	385
						2	2	2	2	CA7-40-M22-*	385				
37	75	11	18.5/20	18.5	7.5	3	5	10	10	25	15	2	2	CA7-40-M22-*	385
85	130	25	45	55	45	7-1/2	15	25	30	60	50	4	0	CA7-90-M40-*	657
85	130	25	45	55	18.5	7-1/2	15	25	30	50	20	2	2	CA7-90-M22-*	657



CA7-23-M22-120 contactor



#### Coil Codes ①

AC Coil Code	Voltage Range	
	50 Hz	60 Hz
24Z	24V	24V
120	110V	120V
208	~	208V
220W	200V-220V	208V-240V
240	220V	240V
277	240V	277V
380	380V-400V	440V
480	440V	480V
600	550V	600V

#### Ordering Instructions

Specify Catalog Number	
Replace (*) with Coil Code	See Coil Codes on this page.

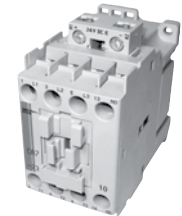
① Other voltages available, see page A56. Non-standard coil voltages not listed here must be ordered and installed separately as renewal parts.

### Non-Reversing, Three Pole Contactors With Electronic DC Coil, Series CA7 (Open type only) ①②③

I <sub>b</sub> [A] ①		Ratings for Switching AC Motors (AC2 / AC3 / AC4)										Auxiliary Contacts per Contactor		Open Type	
		kW (50 Hz)				UL/CSA HP (60 Hz)									
		230V	400V/ 415V	500V	690V	1 Ø		3 Ø							
115V	230V					200V	230V	460V	575V						
AC-3	AC-1											NO	NC	Catalog Number	Price
9	32	3	4	4	4	1/2	1 1/2	2	2	5	7-1/2	1 0	0 1	CA7-9E-10-* CA7-9E-01-*	197
12	32	4	5.5	5.5	5.5	1/2	2	3	3	7-1/2	10	1 0	0 1	CA7-12E-10-* CA7-12E-01-*	242
16	32	5.5	7.5	7.5	7.5	1	3	5	5	10	15	1 0	0 1	CA7-16E-10-* CA7-16E-01-*	267
23	32	7.5	11	13	10	2	3	5	7-1/2	15	15	1 0	0 1	CA7-23E-10-* CA7-23E-01-*	292
30	65	10	15	15	15	2	5	7-1/2	10	20	25	0 1 0	0 0 1	CA7-30E-00-* CA7-30E-10-* CA7-30E-01-*	332 354 354
37	65	11	18.5/ 20	20	18.5	3	5	10	10	25	30	0 1 0	0 0 1	CA7-37E-00-* CA7-37E-10-* CA7-37E-01-*	392 414 414
43	85	13	22	25	22	3	7-1/2	10	15	30	30	0 1 0	0 0 1	CA7-43E-00-* CA7-43E-10-* CA7-43E-01-*	455 475 475



CA7-16E-10-110E contactor ④



CA7-23E-10-24E contactor



CA7-37E-00-24E contactor

#### Description

Low Consumption Electronic DC coils have extremely low inrush which allows the use of smaller power supplies. CA7-9E...43E has internal surge suppression. See page A68 for more information.

This new design results in:

- Lighter, lower depth
- More energy efficient contactors
- Easier wiring
- Uniform panel appearance.

#### Applications

Direct control from PLC:

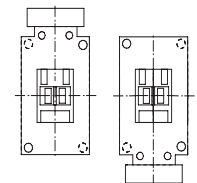
The low power consumption contactor designed to control motors and other loads is especially aligned to the specific requirement of electronic control circuits. The low power consumption of 1.7 allows direct control through PLC's without the need for interposing relays. Power dissipation is greatly reduced limiting the heat effect in control panels.

#### Coil Codes ②④

DC Coil Codes	Voltage
12E	12V
24E	24V
48E	48-72V
110E	110-125V
220E	220-250V

#### Coil Terminal Position

All CA7 contactors are stocked and delivered with the coil terminals located on the line side (top) of the contactor. This is the typical configuration when using the contactor with an overload relay. When the contactor is used with the KT7 Motor Circuit Controller, the coil must be reversed, so that the coil terminals are located at the load side (bottom) of the contactor. CA7 coils can easily be reversed in the field, however, they are also available for order with the coils reversed from the factory. Contact your Sprecher+Schuh representative for more information about ordering CA7 contactors with reversed coils.



All CA7 contactors come with reversible coils. (48V DC shown)

① AC1 Resistive Ratings and UL/CSA Continuous Current Ratings may be increased by the use of Lug Kits or Paralleling Links. See CA7 Accessories section for applicable information.

② CA7-9E...43E with electronic coils are not interchangeable with non-electronic DC or AC coils.

③ See page A47 for limitations on adding auxiliaries to Electronic DC Coil contacts.

④ Voltages of 48V DC and greater are supplied with backpack module standard. See page A85.

**Non-Reversing, Four Pole Contactors With Electronic DC Coil, Series CA7 (Open type only) ①②**

I <sub>e</sub> [A]		Ratings for Switching AC Motors (AC2 / AC3 / AC4)										Contact Configuration, Main Pole		Open Type	
		kW (50 Hz)				UL/CSA HP (60 Hz)									
		230V		400V 415V	500V	690V	1 Ø		3 Ø						
AC-3	AC-1	230V	400V 415V	500V	690V	115V	230V	200V	230V	460V	575V	NO	NC	Catalog Number	Price
9	32	3	4	4	4	1/2	1 1/2	2	2	5	7-1/2	4	0	CA7-9E-M40-*	198
						3	3	5	7-1/2	10	3	1	CA7-9E-M31-*	210	
						2	2	2	2	CA7-9E-M22-*	210				
12	32	1	5.5	5.5	5.5	1/2	2	3	3	7-1/2	10	4	0	CA7-12E-M40-*	240
						3	3	7-1/2	10	3	1	CA7-12E-M31-*	252		
						2	2	2	2	CA7-12E-M22-*	252				
16	32	5.5	7.5	7.5	7.5	1	3	5	5	10	15	4	0	CA7-16E-M40-*	264
						3	3	10	15	3	1	CA7-16E-M31-*	277		
						2	2	2	2	CA7-16E-M22-*	277				
23	32	7.5	11	13	10	2	3	5	7-1/2	15	15	4	0	CA7-23E-M40-*	290
						3	3	15	15	3	1	CA7-23E-M31-*	302		
						2	2	2	2	CA7-23E-M22-*	302				
37	75	11	18.5	20	18.5	3	5	10	10	25	30	4	0	CA7-40E-M40-*	520
37	75	11	18.5/20	18.5	7.5	3	5	10	10	25	15	2	2	CA7-40E-M22-*	535



CA7-23E-M22-24E contactor



**Description**

Low Consumption Electronic DC coils have extremely low inrush which allows the use of smaller power supplies. CA7-9E...43E have internal surge suppression. See page A68 for more information.

This design results in:

- Lighter, lower depth
- More energy efficient contactors
- Easier wiring
- Uniform panel appearance

**Applications**

Direct control from PLC:

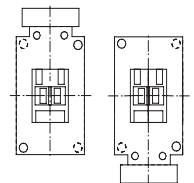
The low power consumption contactor designed to control motors and other loads is especially aligned to the specific requirement of electronic control circuits. The low power consumption of 1.7 allows direct control through PLC's without the need for interposing relays. Power dissipation is greatly reduced limiting the heat effect in control panels.

**Coil Codes ①③**

DC Coil Codes	Voltage
12E	12V
24E	24V
48E	48-72V
110E	110-125V
220E	220-250V

**Coil Terminal Position**

All CA7 contactors are stocked and delivered with the coil terminals located on the line side (top) of the contactor. This is the typical configuration when using the contactor with an overload relay. When the contactor is used with the KT7 Motor Circuit Controller, the coil must be reversed, so that the coil terminals are located at the load side (bottom) of the contactor. CA7 coils can easily be reversed in the field, however, they are also available for order with the coils reversed from the factory. Contact your Sprecher+Schuh representative for more information about ordering CA7 contactors with reversed coils.



All CA7 contactors come with reversible coils. (48V DC shown)

① CA7-9E...43E with electronic coils are not interchangeable with non-electronic DC or AC coils  
 ② See pages A47 for limitations on adding auxiliaries to Electronic DC Coil contacts.  
 ③ Voltages of 48V DC and greater are supplied with backpack module standard. See page A85.

#### Non-Reversing, Three Pole Contactors With Two Winding DC Coil, Series CA7 (Open type only) ①

I <sub>e</sub> [A]		Ratings for Switching AC Motors (AC2 / AC3 / AC4)										Auxiliary Contacts per Contactor ①		Open Type	
		kW (50 Hz)				UL/CSA HP (60 Hz)									
		AC-3	AC-1	230V	400V/ 415V	500V	690V	1 Ø		3 Ø					
115V	230V							200V	230V	460V	575V	NO	NC	Catalog Number	Price
60	100	18.5	32	37	32	5	10	15	20	40	50	0	0	CA7-60D-00-*	475
												1	0	CA7-60D-10-*	497
												0	1	CA7-60D-01-*	497
72	100	22	40	45	40	5	15	20	25	50	60	0	0	CA7-72D-00-*	530
												1	0	CA7-72D-10-*	552
												0	1	CA7-72D-01-*	552
85	100	25	45	55	45	7-1/2	15	25	30	60	60	0	0	CA7-85D-00-*	590
												1	0	CA7-85D-10-*	612
												0	1	CA7-85D-01-*	612
97	130	30	55	55	55	10	20	30	30	75	75	0	0	CA7-97D-00-*	757
												1	0	CA7-97D-10-*	779
												0	1	CA7-97D-01-*	779



CA7-60D Contactor

#### Description:

Contactors with two winding DC coils have very low hold-in values and share the same dimensions with AC contactors. See page A57 for more information. See page A84 for dimensional information.

#### Non-Reversing, Four Pole Contactors With Two Winding DC Coil, Series CA7 (Open type only) ①

I <sub>e</sub> [A]		Ratings for Switching AC Motors (AC2 / AC3 / AC4)										Contact Configuration Main Pole		Auxiliary Contacts per Contactor		Open Type	
		kW (50 Hz)				UL/CSA HP (60 Hz)											
		AC-3	AC-1	230V	415V 400V	500V	690V	1 Ø		3 Ø							
115V	230V							200V	230V	460V	575V	NO	NC	Catalog Number	Price		
85	130	25	45	55	45	7-1/2	15	25	30	60	50	4	0	0	0	CA7-90D-M40-*	781
85	130	25	45	55	18.5	7-1/2	15	25	30	50	20	2	2	0	0	CA7-90D-M22-*	781

#### Coil Codes ②③④

DC Coil Code	Voltage
24DD	24V
110DD	110V

#### Ordering Instructions

Specify Catalog Number	
Replace (*) with Coil Code	See Coil Codes on this page.

- ① CA7-60D...CA7-97D have an internal auxiliary contact to transition from the start winding to the run winding.
- ② Coils include an integrated diode surge suppressor.
- ③ Other coil voltages are available, see page A57. Contact your Sprecher + Schuh Sales Representative to determine which coil voltages may be stocked. *Non-standard coil voltages (non-stock) must be ordered and installed separately as renewal parts.*
- ④ The coil codes shown are the most commonly stocked items. Contact your Sprecher + Schuh representative to determine if other voltages, i.e., 12DD, 48DD, 220DD are on-hand or can be specially ordered in quantities.