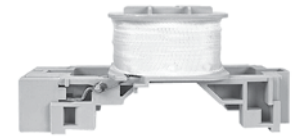


Renewal Coils - A.C. ①②③

AC Control Voltages			AC Coil Codes ②	For use with contactor ...													
				CA7-9...16 CA7-9-M...16-M... CAQ7-16 CNX-205...206 CAN7-12...16	CA7-23...37 CA7-23-M...37-M... CAQ7-37 CNX-207...209 CAN7-37	CA7-43 ~ ~ CNX-212 CA7-40-M, CAN7-43	CA7-60...85 ~ ~ CNX-218 CAN7-85	CA7-97 CA7-90-M... ~ ~ CAL(V)7-60-M40	Cat. No.	Cat. No.	Cat. No.	Cat. No.	Cat. No.				
50 Hz	60 Hz	50/60 Hz															
~	12V	~	12B	TA006	TC006	TD006	TE006	TF006									
12V	~	~	12A	TA404	TC404	TD404	TE404	TF404									
~	24V	~	24B	TA013	TC013	TD013	TE013	TF013									
24V	~	~	24A	TA407	TC407	TD407	TE407	TF407									
~	~	24V	24Z	TA855	TC855	TD855	TE855	TF855									
32V	36V	~	36	TA481	TC481	TD481	TE481	TF481									
36V	~	~	36A	TA410	TC410	TD410	TE410	TF410									
42V	48V	~	48	TA482	TC482	TD482	TE482	TF482									
48V	~	~	48A	TA414	TC414	TD414	TE414	TF414									
~	~	48V	48Z	TA860	TC860	TD860	TE860	TF860									
100V	100...110V	100	110	TA861	TC861	TD861	TE861	TF861									
110V	120V	~	120	TA473	TC473	TD473	TE473	TF473									
~	~	110V	110Z	TA856	TC856	TD856	TE856	TF856									
120V	~	~	120A	TA425	TC425	TD425	TE425	TF425									
127V	~	~	127	TA428	TC428	TD428	TE428	TF428									
200V	200.. 220V	200V	220	TA862	TC862	TD862	TE862	TF862									
~	208V	~	208	TA049	TC049	TD049	TE049	TF049									
200...220V	208.. 240V	~	220W	TA296	TC296	TD296	TE296	TF296									
220V	240V	~	240	TA474	TC474	TD474	TE474	TF474									
200V..230V	~	~	230A	TA441	TC441	TD441	TE441	TF441									
~	~	230V	230Z	TA851	TC851	TD851	TE851	TF851									
230V..240V	~	~	240A	TA440	TC440	TD440	TE440	TF440									
240V	277V	~	277	TA480	TC480	TD480	TE480	TF480									
~	~	240V	240Z	TA858	TC858	TD858	TE858	TF858									
~	347V	~	347	TA065	TC065	TD065	TE065	TF065									
~	380V	~	380B	TA067	TC067	TD067	TE067	TF067									
380V..400V	440V	~	380	TA071	TC071	TD071	TE071	TF071									
~	~	400V	400Z	TA863	TC863	TD863	TE863	TF863									
400V..415V	~	~	415	TA457	TC457	TD457	TE457	TF457									
440V	480V	~	480	TA475	TC475	TD475	TE475	TF475									
~	~	440V	440Z	TA859	TC859	TD859	TE859	TF859									
500V	~	~	500	TA479	TC479	TD479	TE479	TF479									
550V	600V	~	600	TA476	TC476	TD476	TE476	TF476									
Price				59	84	101	118	118									



CA7 AC Coil (typical)

① Other coil voltages available. Contact your Sprecher + Schuh representative for information.
 ② AC Codes in bold letters and shaded indicate coils that are standard stocked items.
 ③ AC and DC coils on CNX-xxx contactors are not interchangeable.

Renewal Coils - D.C. ①②

DC Control Voltages	DC Coil Codes ②	Electronic DC Replacement Coils ⑥			True DC Replacement Coils ⑦			Two Winding DC Replacement Coils	
		For use with contactor...			For use with contactor...			For use with contactor...	
		CA7-9E...16E CA7-9E-M...16E-M... CAN7-12E...16E	CA7-23E...37E CA7-23E-M... CAN7-37E	CA7-43E CA7-40E-M... CAN7-43E	CA7-9C(D)...16C(D) CA7-9C(D)-M... 16C (D)-M... CNX-205...206 CAN7-12C...16C	CA7-23C(D)...37C(D) CA7-23C(D)-M... CNX-207...209 CAN7-37C	CA7-43C CA7-43C(D) CA7-40C-M... CNX7-212 CAN7-43C	CA7-60D...85D ⑧ CNX7-218 CAN7-85D	CA7-97D ⑨ CA7-90D-M...
Cat. No.	Cat. No.	Cat. No.	Cat. No.	Cat. No.	Cat. No.	Cat. No.	Cat. No.		
9V ③	9D	~	~	~	TA766	TC766	TD766	~	~
9V Diode ③	9DD	~	~	~	~	~	~	TE766M	TF766M
12V Electronic	12E	TC708E	TC708E	TD708E	~	~	~	~	~
12V	12D	~	~	~	TA708	TC708	TD708	~	~
12V Diode	12DD	~	~	~	~	~	~	TE708M	TF708M
24V Electronic	24E	TC714E	TC714E	TD714E	~	~	~	~	~
24V ④	24D	~	~	~	TA714	TC714	TD714	~	~
24V Diode ④	24DD	~	~	~	TA714M	TC714M	TD714M	TE714M	TF714M
36V	36D	~	~	~	TA719	TC719	TD719	~	~
36V Diode	36DD	~	~	~	~	~	~	TE719M	TF719M
48-72V Elec	48E	TC724E	TC724E	TD724E	~	~	~	~	~
48V	48D	~	~	~	TA724	TC724	TD724	~	~
48V Diode	48DD	~	~	~	~	~	~	TE724M	TF724M
60V	60D	~	~	~	TA774	TC774	TD774	~	~
60V Diode	60DD	~	~	~	~	~	~	TE774M	TF774M
64V	64D	~	~	~	TA727	TC727	TD727	~	~
64V Diode	64DD	~	~	~	~	~	~	TE727M	TF727M
72V	72D	~	~	~	TA728	TC728	TD728	~	~
72V Diode	72DD	~	~	~	~	~	~	TE728M	TF728M
80V	80D	~	~	~	TA729	TC729	TD729	~	~
80V Diode	80DD	~	~	~	~	~	~	TE729M	TF729M
110-125V Elec	110E	TC733E	TC733E	TD733E	~	~	~	~	~
110V	110D	~	~	~	TA733	TC733	TD733	~	~
110V Diode	110DD	~	~	~	~	~	~	TE733M	TF733M
115V	115D	~	~	~	TA734	TC734	TD734	~	~
115V Diode	115DD	~	~	~	~	~	~	TE734M	TF734M
125V	125D	~	~	~	TA737	TC737	TD737	~	~
125V Diode	125DD	~	~	~	~	~	~	TE737M	TF737M
220-250V Elec	220E	TC747E	TC747E	TD747E	~	~	~	~	~
220V	220D	~	~	~	TA747	TC747	TD747	~	~
220V Diode	220DD	~	~	~	~	~	~	TE747M	TF747M
230V	230D	~	~	~	TA749	TC749	TD749	~	~
230V Suppres.	230DS	~	~	~	~	~	~	TE749M	TF749M
250V	250D	~	~	~	TA751	TC751	TD751	~	~
250V Suppres.	250DS	~	~	~	~	~	~	TE751M	TF751M
Price (coil without diode)		~	~	~	92	126	160	~	~
Price (coil with diode)		202	202	215	134	168	202	235	235

Note: The “DD” coils listed above include an integrated bidirectional diode. Drop out time of this design is significantly improved when compared to an external diode. See ratings on page A68.

- ① Other coil voltages may be available. Contact your Sprecher + Schuh representative for information.
- ② DC Codes in bold letters and shaded indicate coils that are standard stocked items.
- ③ Voltage operating range: $0.65 \dots 1.3 \times U_s$
- ④ Voltage operating range: $0.7 \dots 1.25 \times U_s$
- ⑤ CA7-60D...97D contactors have a two winding coil with built-in late break auxiliary contact and coil suppression.
- ⑥ CA7-9E...43E electronic coils are not interchangeable with non-electronic DC or AC coils
- ⑦ AC and DC coils on CNX-xxx contactors are not interchangeable.



12V & 24V Electronic DC coil



48V, 110V & 220V Electronic DC coil with Back Pack



Two Winding DC coil (typical) ⑧